

NO BOUNDARIES TO WHERE YOU WANT TO GO.

TSGS



bluesign<sup>®</sup>  
APPROVED

[www.tsgs.asia](http://www.tsgs.asia)   
[tape@tsgs.asia](mailto:tape@tsgs.asia)   
+886-3-4389900   
No.855, Huannan Rd., Guanyin Dist.,  
Taoyuan City 328, Taiwan (R.O.C.) 

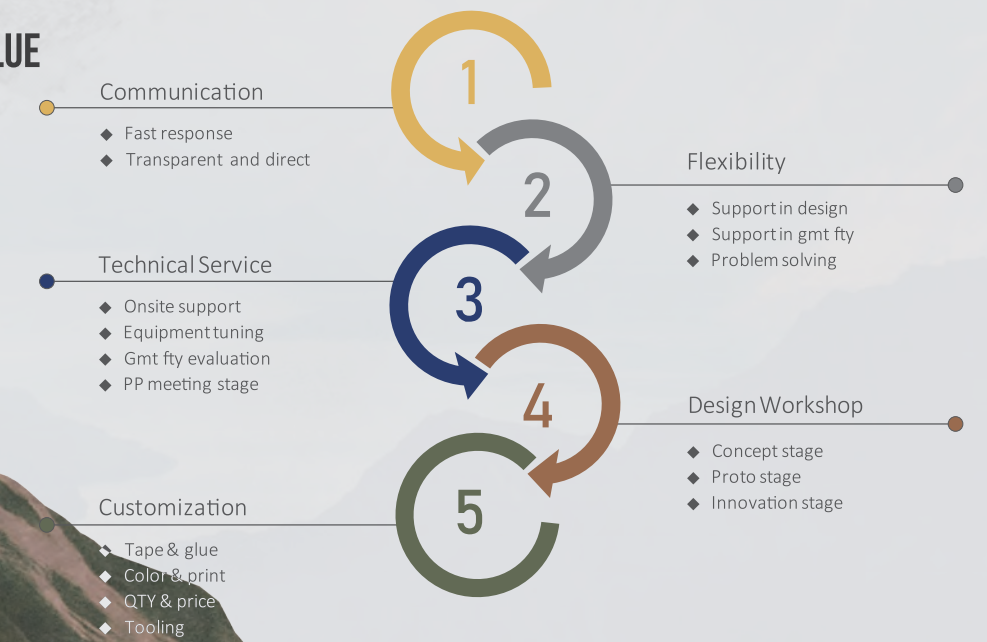


[www.tsgs.asia](http://www.tsgs.asia)

**ABOUT TSGS** A seam sealing tape and adhesive glue supplier based in Taiwan. The strength in unique glue recipes and customization to fabric with internal team processing on style, design and process makes any new developments easy for our customers to work with the expert team.

TSGS is composed of experts in glue, tape, fabric and garment, thus able to communicate appropriately throughout for full package service. Our goal is to make sure everything is smooth from concept to final product for all our customers. Of course, on-site technical support or training is available with ease.

## CORE VALUE



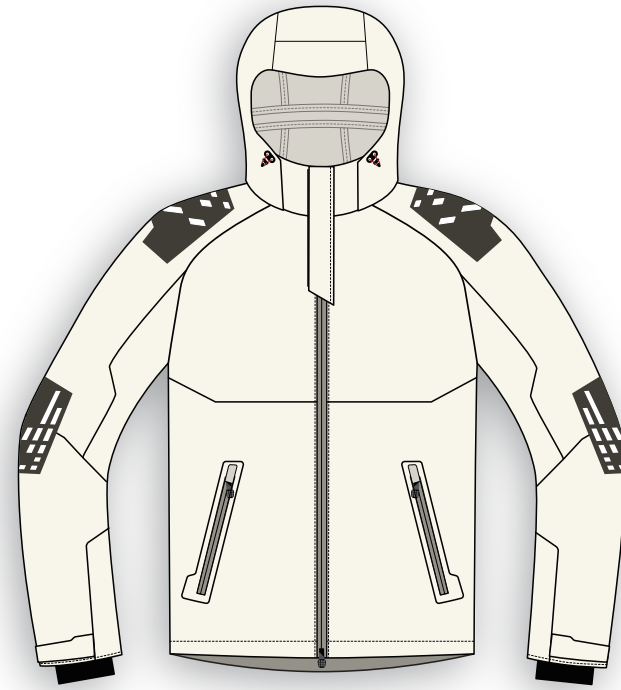
TSGS regards diversity as the cornerstone of innovation. We have talents from different backgrounds who speaks a variety of technical languages. They can provide professional communication bridges for brands, fabric mills and garment factories and assist them in integrating multiple aspects of information. We are working together to change the future with inspiration, curiosity and creativity.

## WHAT WE CAN DO

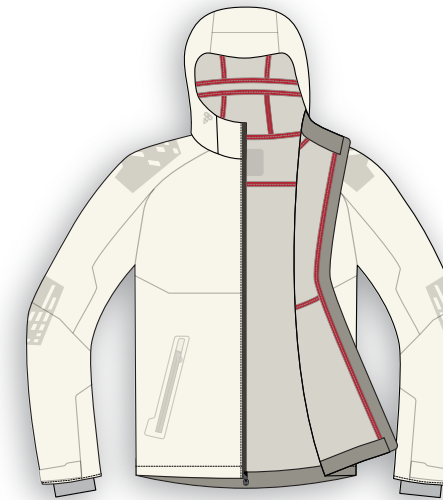


## WHY WE DO IT

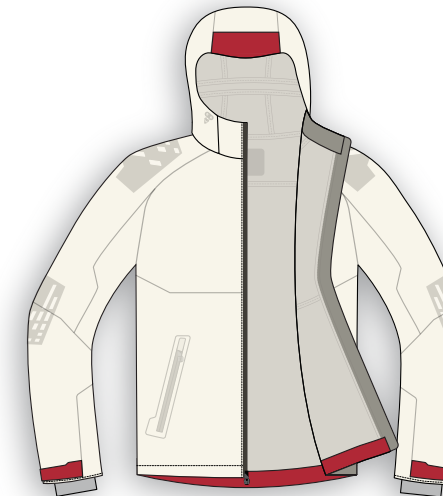
By participating in the design prior to innovation development stage, we are able to provide the best process for the structure of the garment and willing to offer an on-site technical support, as to assist the factory to adjust the machine requirements to optimize the product under the best conditions. At the same time, we also assist in reviewing the style of the workmanship to ensure that the bulk of the goods can proceed smoothly.



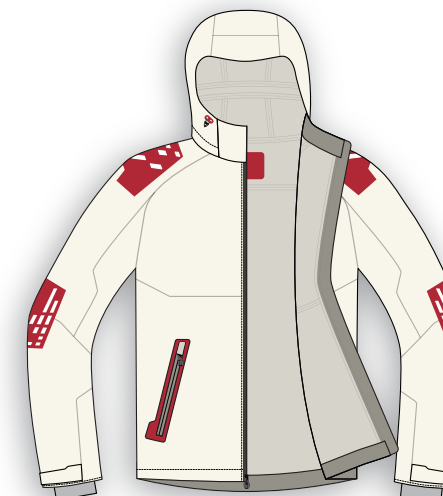
**PRODUCT  
CATEGORY  
OVERVIEW**



**SEAM TAPE** is a heat activated glue tape applied to sewn seams of fabrics to prevent water from leaking through the sewing holes. It can also be used as reinforcement tape for seamless constructions. Application is easy with hot air machines.

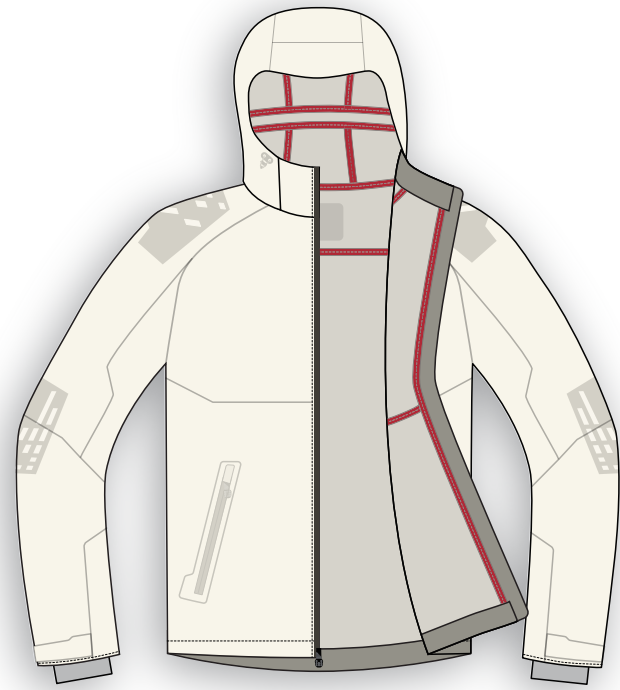


**ADHESIVE** is a heat activated glue applied to fabrics to construct seamless bonding. Application is easy with heat press machines. Best used on hemming, hood brim, pocket & zipper areas.

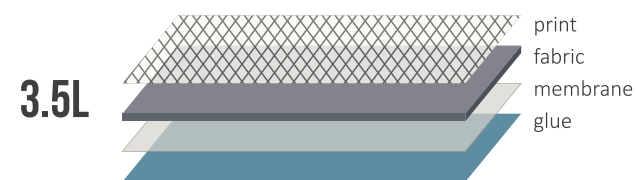
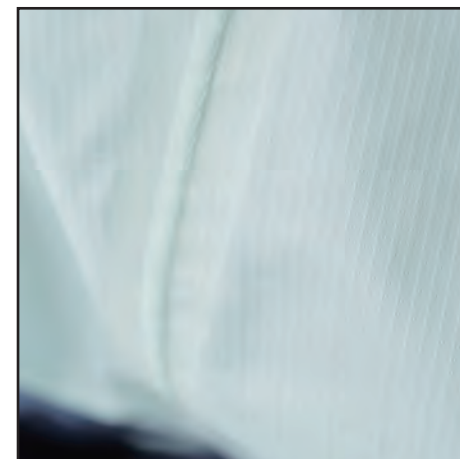
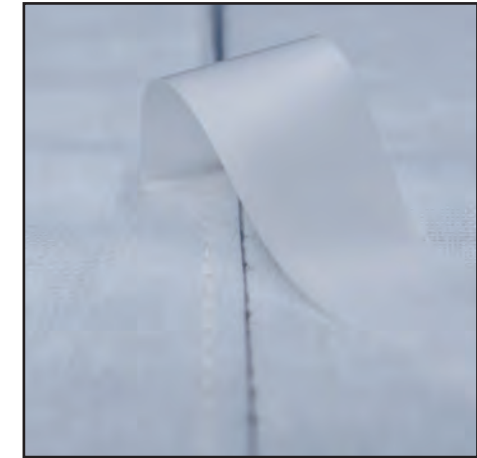
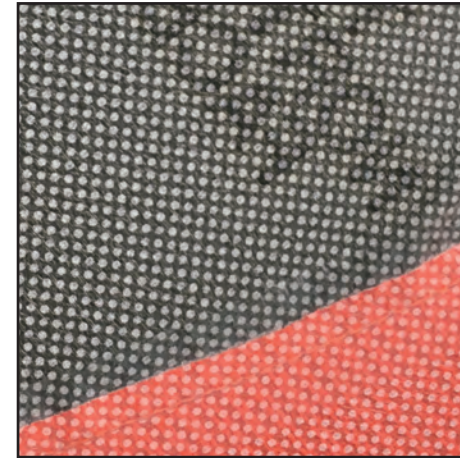


**OVERLAY** is a heat activated glue film applied to fabric for decorative use. These comes in customized colors, with a variety of appearance to choose from. Thin color films to abrasion resistance up to 50,000 rubs (Martindale method).

## SEAM TAPE/ 2L CLEAR TAPE



**SEAM TAPE** is a heat activated glue tape applied to sewn seams of fabrics to prevent water from leaking through the sewing holes. It can also be used as reinforcement tape for seamless constructions. Application is easy with hot air machines.



**TOUCH FREE**

ARTICLE NO. S24908

THICKNESS 0.06 mm ± 0.02 mm

CONTENT 100% Polyurethane

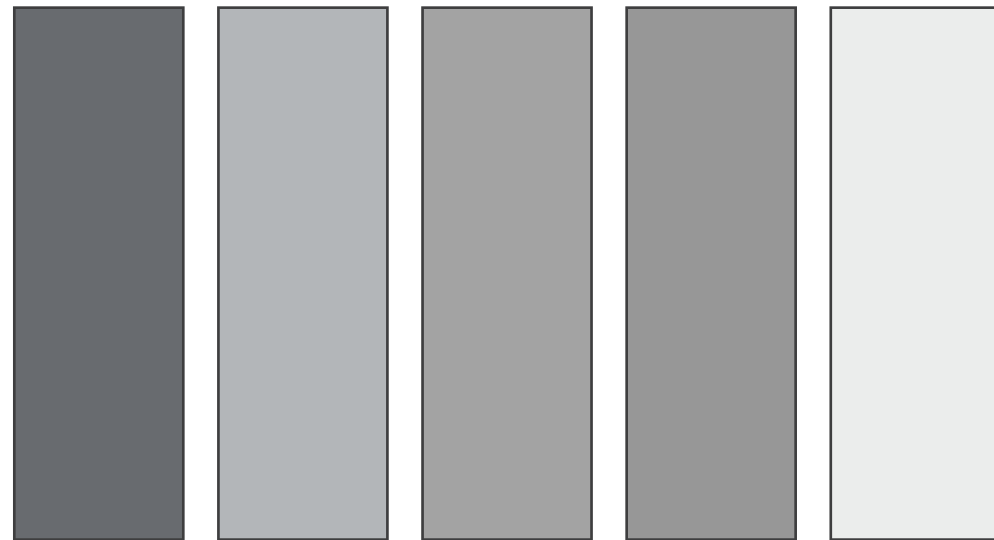
**SEE FREE**

ARTICLE NO. S25908

THICKNESS 0.10 mm ± 0.02 mm

CONTENT 100% Polyurethane

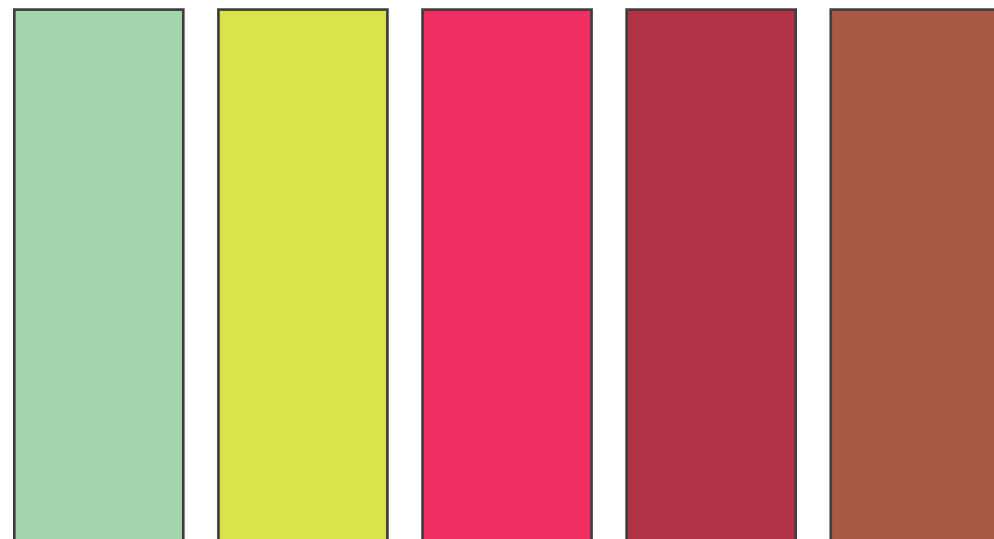
SEAM TAPE/ 2L COLOR TAPE



GRY860 GRY002 GRY420 GRY472 WHI811



GRN860 DBL450 GRY032 GRY952 BLK200



LGR810 YEL340 PNK020 RED960 BR0620

DYE TO MATCH

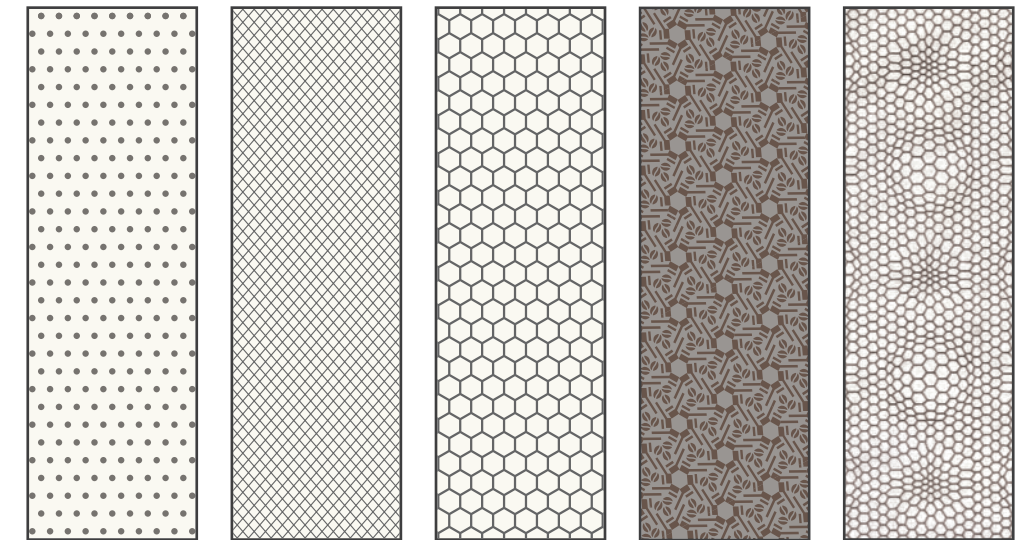
ARTICLE NO. S25908-DTM  
 THICKNESS 0.10 mm ± 0.02 mm  
 CONTENT 100% Polyurethane

More customized recipes and colors upon request

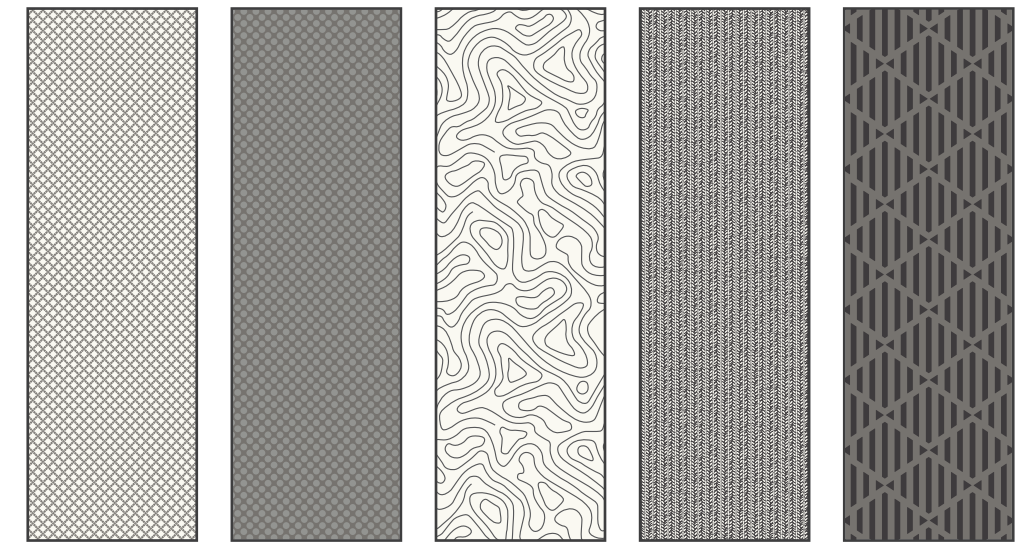
tape@tsgs.asia

Seam tape/ 2L COLOR TAPE

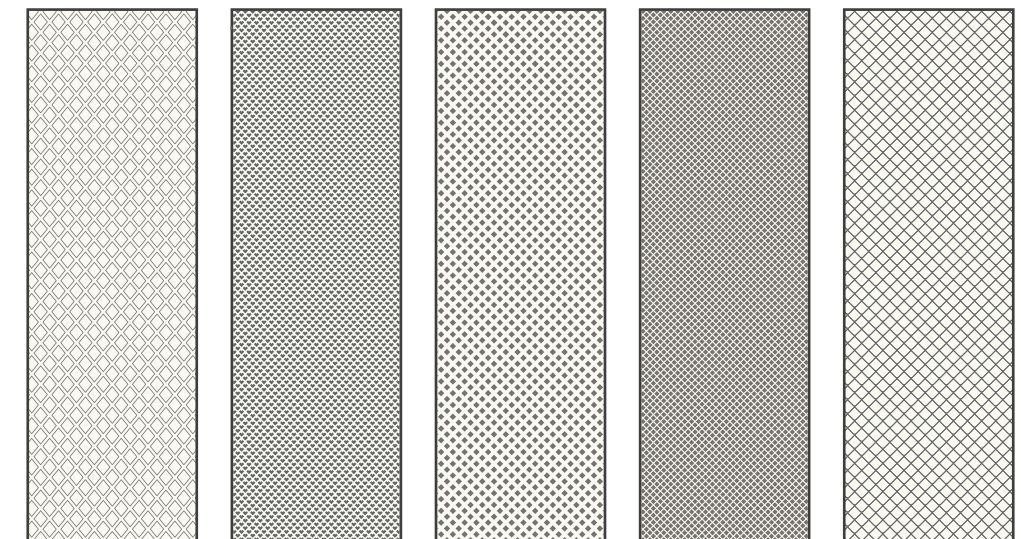
SEAM TAPE/ 2.5L PRINTED TAPE



PRT543 PRT410 PRT930 PRT112 PRT450



PRT223 PRT071 PRT050 PRT033 PRT862



PRT131 PRT851 PRT681 PRT391 PRT452

PATTERN TO MATCH

ARTICLE NO. S25908-PTM  
 THICKNESS 0.13 mm ± 0.02mm  
 CONTENT 100% Polyurethane

More customized recipes and colors upon request

tape@tsgs.asia

Seam tape/ 2.5L PRINTED TAPE

## SEAM TAPE/ 2.5L CENTRAL PRINTED TAPE

ARTICLE NO. S25908-MID  
 THICKNESS 0.13 mm ± 0.02 mm  
 CONTENT 100% Polyurethane



## SEAM TAPE/ 3L KNIT TAPE

### 20D INTERLOCK

ARTICLE NO. S30908  
 THICKNESS 0.45-0.60 mm ± 0.05 mm  
 COLOR Customized  
 CONTENT 20% Polyester  
 80% Polyurethane

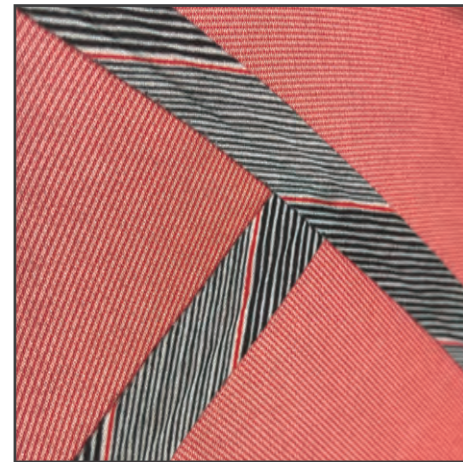
### 20D SINGLE JERSEY

ARTICLE NO. S38308  
 THICKNESS 0.31-0.37 mm ± 0.05 mm  
 COLOR Customized  
 CONTENT 12% Polyester  
 88% Polyurethane

## SEAM TAPE/ 3.5L PRINTED TAPE

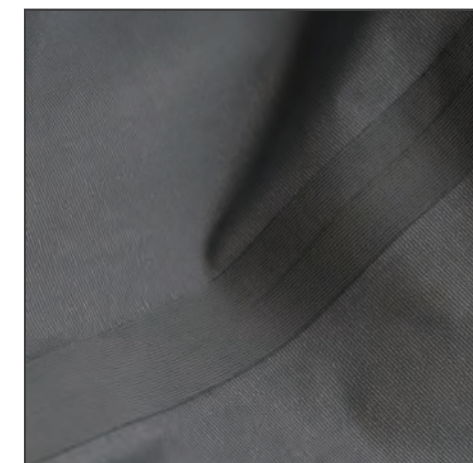
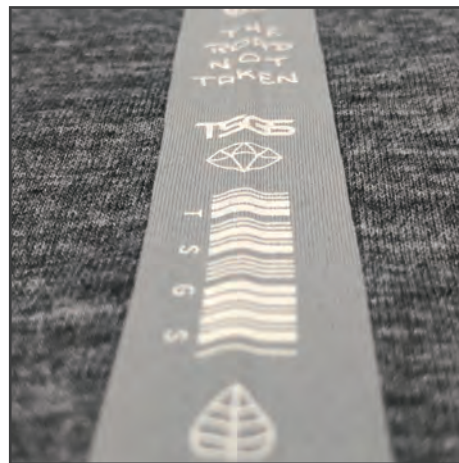
### 20D INTERLOCK

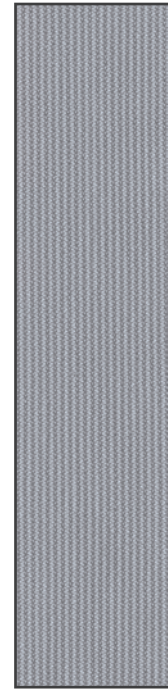
ARTICLE NO. S30908-PTM  
 THICKNESS 0.45-0.60 mm ± 0.05 mm  
 COLOR Customized  
 CONTENT 20% Polyester  
 80% Polyurethane



### 20D INTERLOCK

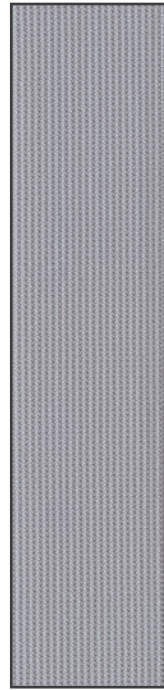
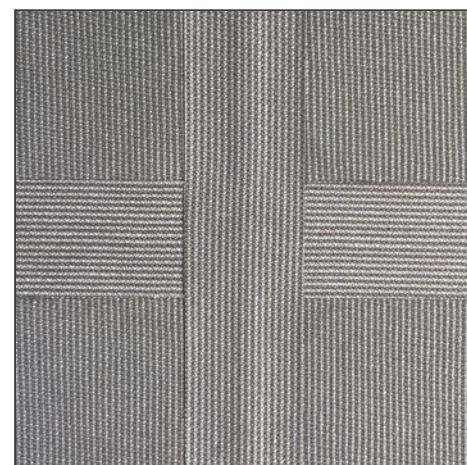
ARTICLE NO. S30908-MID  
 THICKNESS 0.45-0.60 mm ± 0.05 mm  
 COLOR Customized  
 CONTENT 20% Polyester  
 80% Polyurethane





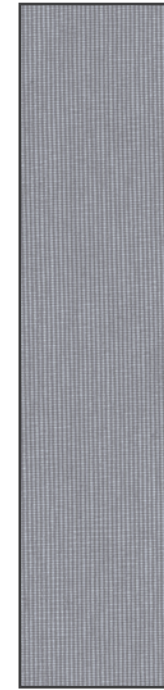
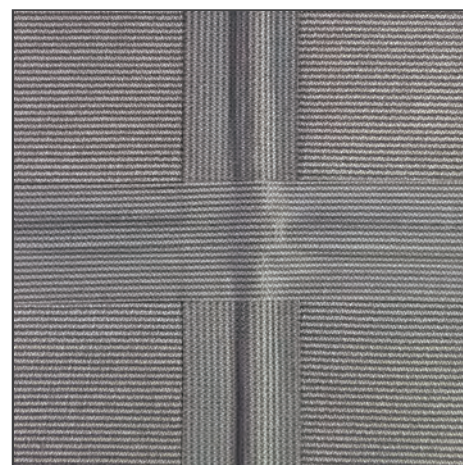
20D TRICOT

ARTICLE NO. S36708  
 THICKNESS 0.36 mm ± 0.05mm  
 COLOR Grey and Black  
 CONTENT 10% Nylon  
 90% Polyurethane



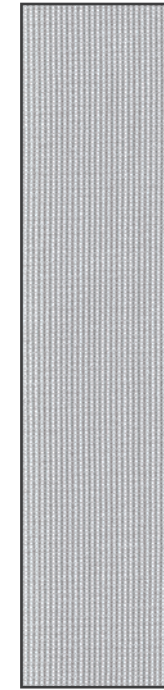
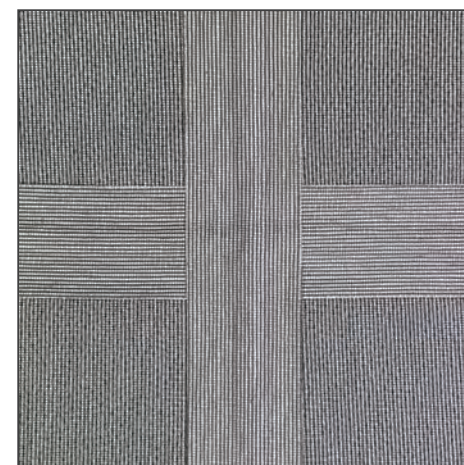
15D TRICOT

ARTICLE NO. S38618  
 THICKNESS 0.28 mm ± 0.05 mm  
 COLOR Grey and Black  
 CONTENT 13 % Nylon  
 87 % Polyurethane



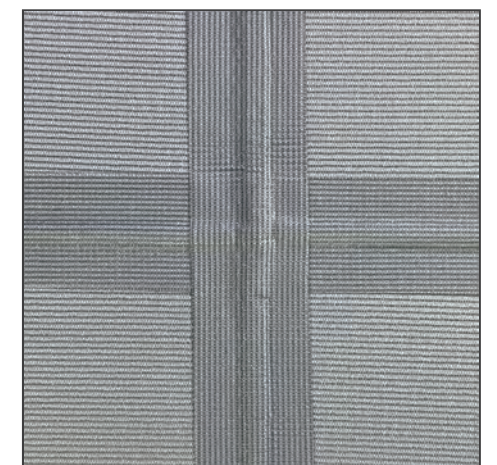
10D TRICOT

ARTICLE NO. S32518  
 THICKNESS 0.23 mm ± 0.05 mm  
 COLOR Grey  
 CONTENT 10% Polyester  
 90% Polyurethane



7D TRICOT

ARTICLE NO. S36618  
 THICKNESS 0.23 mm ± 0.05 mm  
 COLOR Grey  
 CONTENT 6% Nylon  
 94% Polyurethane



More customized recipes upon request

tape@tsgs.asia



## ADHESIVE/

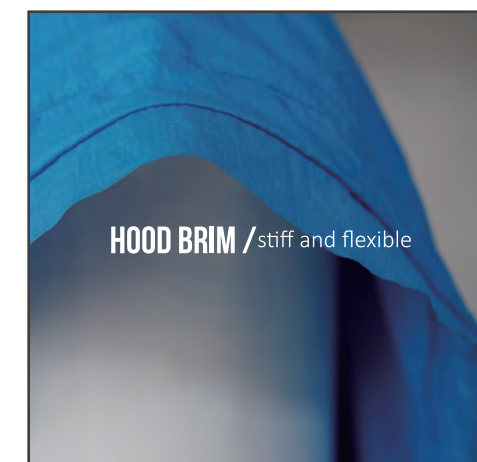
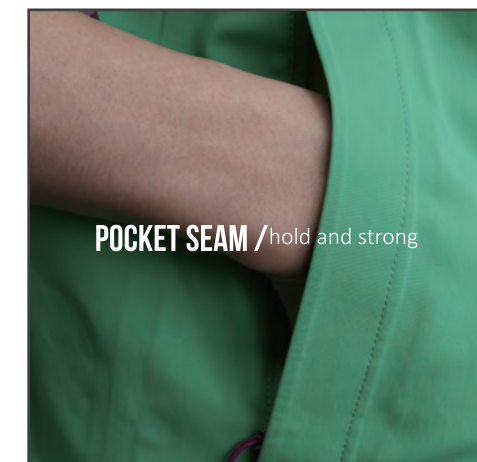
ARTICLE NO. A10118  
THICKNESS 0.08-0.10 mm  $\pm$  0.01 mm  
CONTENT 100% Polyurethane  
BEST FOR Cire Fabric, Soft and Thin

ARTICLE NO. A10608  
THICKNESS 0.08-0.14 mm  $\pm$  0.01 mm  
CONTENT 100% Polyurethane  
BEST FOR DWR fabric

ARTICLE NO. A12418  
THICKNESS 0.14 mm  $\pm$  0.02 mm  
CONTENT 100% Polyurethane  
BEST FOR Light DWR fabric,  
Hood Brim, Hem

ARTICLE NO. A13808  
THICKNESS 0.30 mm  $\pm$  0.01 mm  
CONTENT 100% Polyurethane  
BEST FOR Hardshell Hood Brim,  
Hard and Thick

ARTICLE NO. A13618  
THICKNESS 0.14 mm  $\pm$  0.02 mm  
CONTENT 100% Polyurethane  
BEST FOR Stretchy fabric



**ADHESIVE** is a heat activated glue applied to fabrics to construct seamless bonding. Application is easy with heat press machines. Best used on hemming, hood brim, pocket & zipper areas.

## OVERLAY/ DECORATIVE



**OVERLAY** is a heat activated glue film applied to fabric as decorative use. These comes in customized colors, with a variety of appearance to choose from. Thin color films to abrasion resistance up to 50,000 rubs (Martindale method).

### SOLID COLOR

ARTICLE NO. F41008-DTM  
 THICKNESS 0.12 mm ± 0.01 mm  
 COLOR Customized  
 CONTENT 100% Polyurethane



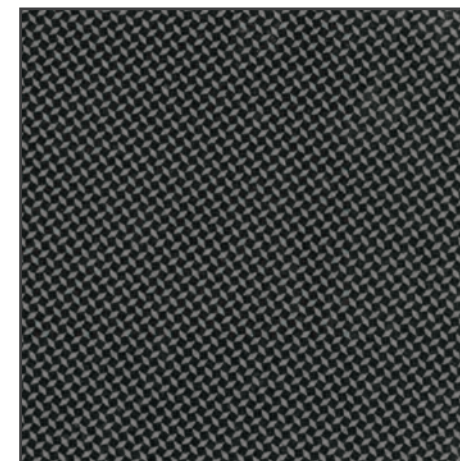
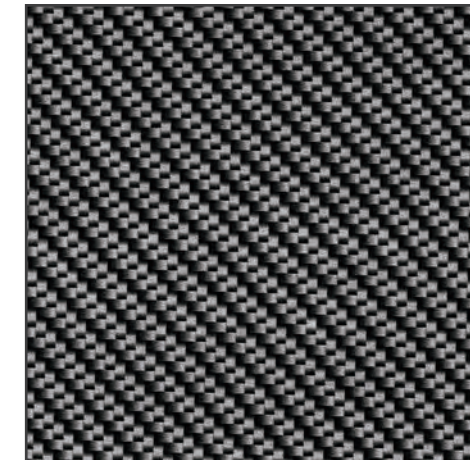
PRT560



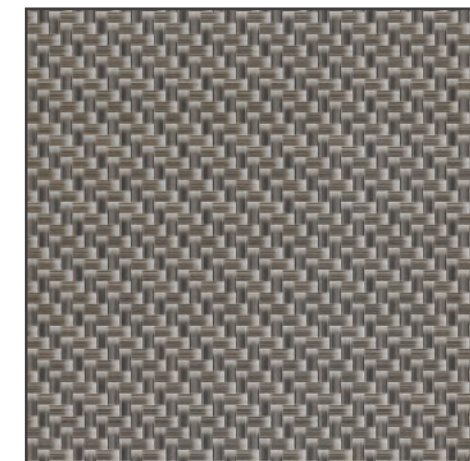
PRT251

### PATTERN

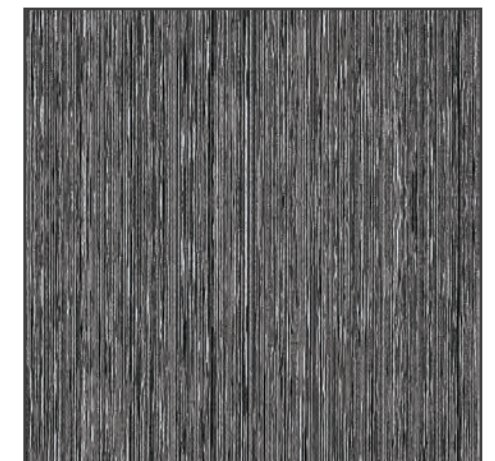
ARTICLE NO. F41008-Pattern  
 THICKNESS 0.13 mm ± 0.01 mm  
 COLOR Pattern Available as shown  
 CONTENT 100% Polyurethane



PRT883



PRT983



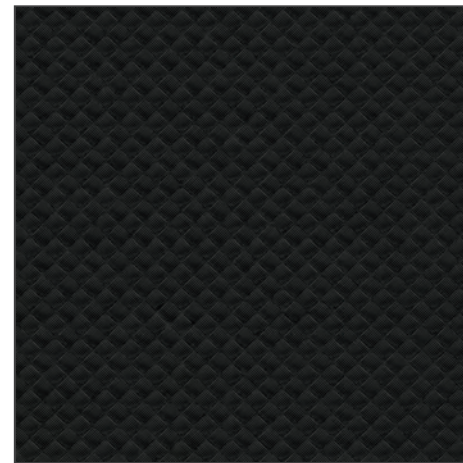
PRT200

\* Light abrasion resistance of 10,000 rubs (Martindale method)  
 More customized recipes and colors upon request

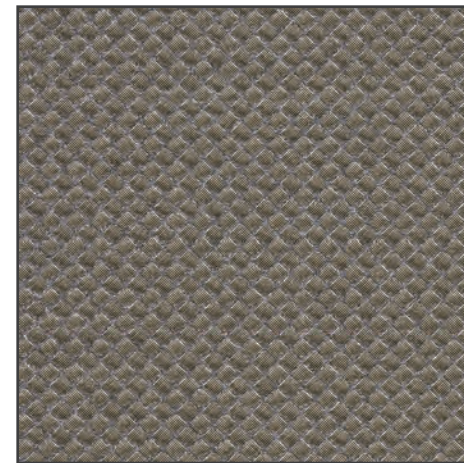
✉ [tape@tsgs.asia](mailto:tape@tsgs.asia)

## OVERLAY/ ABRASION RESISTANCE FILM

ARTICLE NO. F49308  
 THICKNESS 0.15 mm ± 0.05 mm  
 COLOR Customized  
 CONTENT 100% Polyurethane

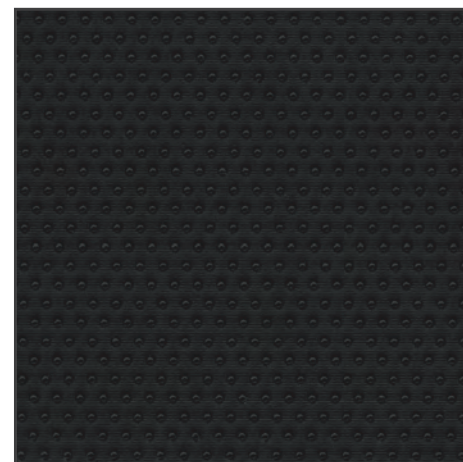


BLK680

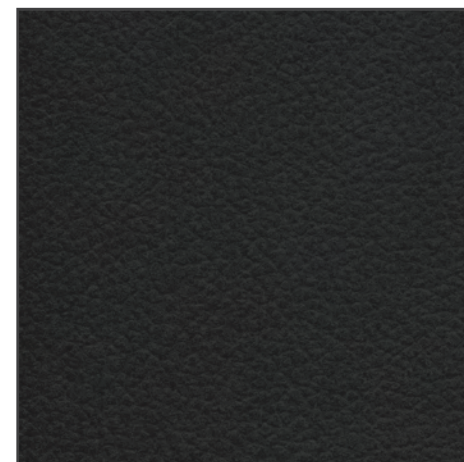


CPR780

ARTICLE NO. F2 Series  
 THICKNESS 0.36-0.48 mm ± 0.05 mm  
 COLOR Black Only  
 CONTENT 100% Polyurethane



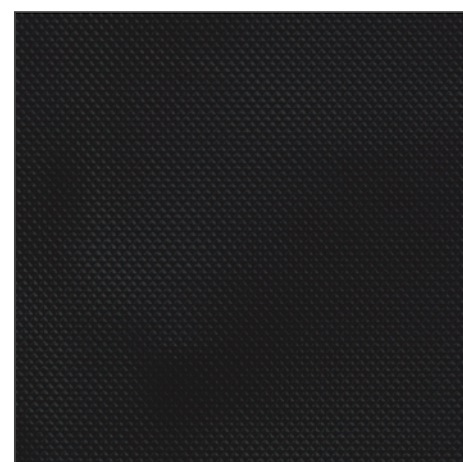
F20308



F21308



F25108



F27108



F22308

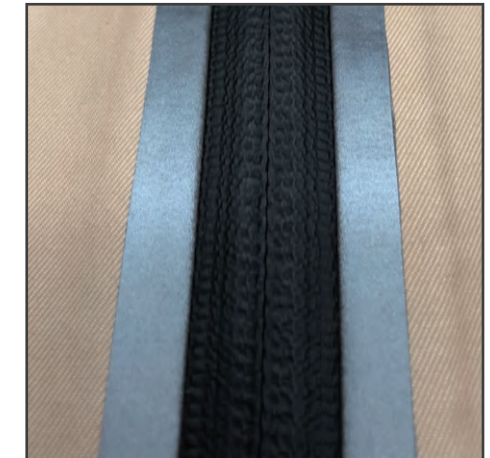
\* High abrasion resistance of 20,000 ~ 50,000 rubs (Martindale method)

Overlay/ ABRASION RESISTANCE FILM

## OVERLAY/ REFLECTIVE FILM

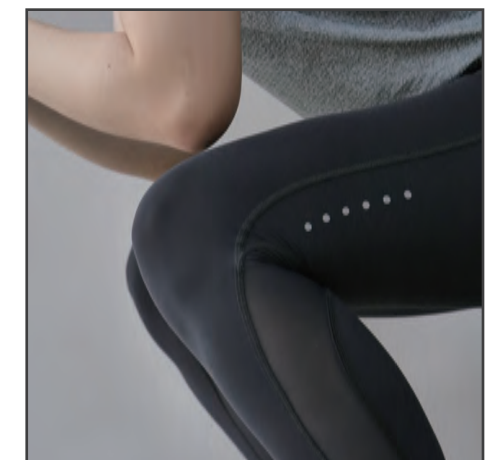
### STRETCH

ARTICLE NO. F43608-BLK201  
 THICKNESS 0.17 mm ± 0.03mm  
 COLOR Black  
 CONTENT 20% Glass  
 80% Polyurethane



### STRETCH

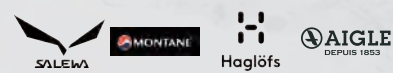
ARTICLE NO. F41608-SIL310  
 THICKNESS 0.15 mm ± 0.03 mm  
 COLOR Silver  
 CONTENT 20% Glass  
 80% Polyurethane



### NON-STRETCH

ARTICLE NO. F48008-SIL441  
 THICKNESS 0.13 mm ± 0.05 mm  
 COLOR Silver  
 CONTENT 20% Glass  
 80% Polyurethane





**FLEXIBLE SERVICE** means everything in TSGS can be customized to color, print, touch, handfeel, material, and of course glue recipe to the fabric and style of choice. Added value is our innovation R&D facility-Won.House where concept becomes visual products in one quick go.

